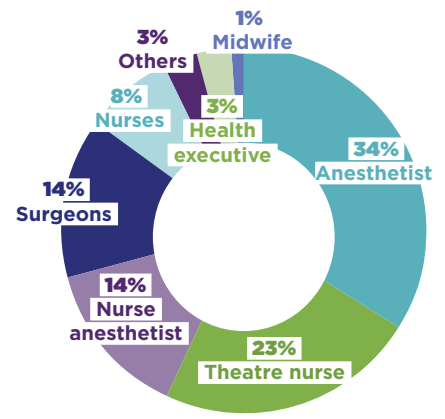


Place of exercise

1916
respondents

(November 7th to December 20th 2018)



Profession

WORKING RELATIONSHIPS ON TECHNICAL PLATFORMS SURVEY

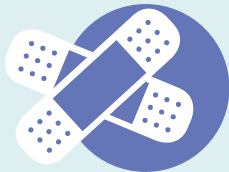
Main results



90%

of caregivers have witnessed a conflict between professionals

It's verbal abuse in **97%** of case, physical violence towards someone in **14%** of cases and physical violence on equipment in **12%** of case.



63%

have been victims of violence from another health professional

30%

perpetrated violence against another health professional



97%

say that conflict compromises quality of care



75%

felt powerless when facing a conflict

16%

of hospitals have yet a formalized procedure of conflict declaration



POOR COMMUNICATION AND MISUNDERSTANDING OF EVERYONE'S PROBLEMS

64 %



WORKLOAD, FATIGUE AND STAFF SHORTAGE

59 %



DISORGANIZATION OF CARE, BAD MANAGEMENT

51 %



INAPPROPRIATE PERSONALITY, ABUSE OR COMPETITION OF POWER

44 %



The main causes of conflicts



CFAR
COMMISSION
S.M.A.R.T.

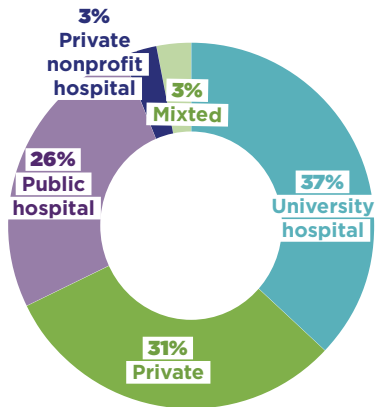
#1PATIENTEQUIPE
WWW.CFAR.ORG



81% say that a campaign and tools would be useful to prevent and manage conflicts between health professionals

WORKING RELATIONSHIPS ON TECHNICAL PLATFORMS SURVEY

Main results

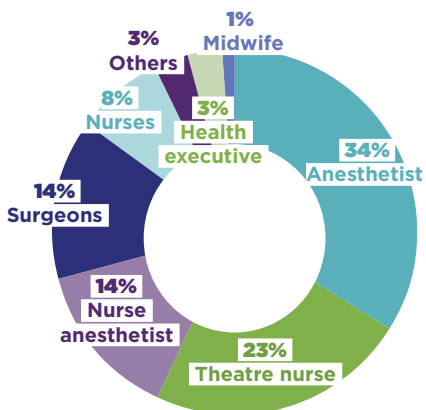


Place of exercise



1916
respondents

(November 7th to December 20th 2018)



Profession



90%

of caregivers
have witnessed a conflict
between professionals

It's verbal abuse in **97%** of case,
physical violence towards someone
in **14%** of cases and physical violence
on equipment in **12%** of case.



30%

perpetrated violence
against another
health professional



97%

say that conflict
compromises
quality of care



63%

have been victims
of violence from another
health professional



75%

felt powerless
when facing a conflict



16%

of hospitals have yet
a formalized procedure
of conflict declaration

The main causes of conflicts

POOR
COMMUNICATION AND
MISUNDERSTANDING
OF EVERYONE'S
PROBLEMS

64 %



WORKLOAD,
FATIGUE
AND STAFF
SHORTAGE

59 %



DISORGANIZATION
OF CARE, BAD
MANAGEMENT

51 %



INAPPROPRIATE
PERSONALITY,
ABUSE OR
COMPETITION
OF POWER

44 %



81% say that a campaign and tools would be useful
to prevent and manage conflicts between health professionals



COMMISSION
S.M.A.R.T.
#1PATIENTEQUIPE
WWW.CFAR.ORG